



Wire Wound 3 Pin Power Inductors—SMD Series



FEATURES

- Lead-free materials in used for the plating on the terminals.
- The product uses metal terminals, which realize excellent connection reliability
- Unshielded power inductor
- Harious package size and wide inductance range.

APPLICATIONS

- Graphic cardsl, cordless phone. Buzzer alarm, Personal computers, Humidifier.

PRODUCT IDENTIFICATION



01 Type	
SMD	Wire Wound power Inductor

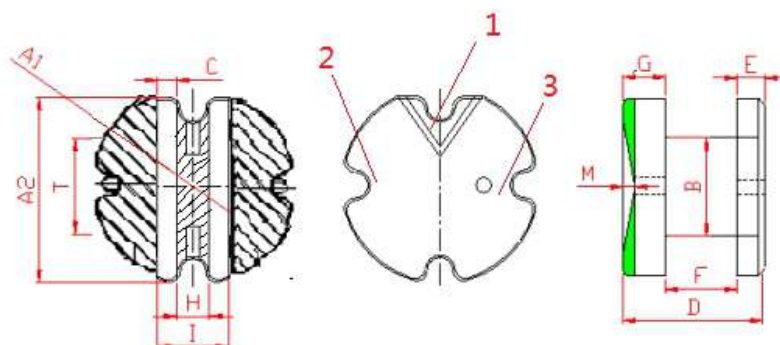
02 External Dimensions (LxW)(mm)	
5845	5.8x 4.5
8050	8.0x 5.0

03 Nominal Inductance(L1-L2)	
Example	Nominal value
250	25uH
251	250uH
252	2500uH

04 Nominal Inductance(L3-L2)	
Example	Nominal value
800	80uH
801	800uH
802	8000uH

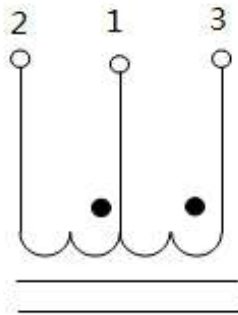
05 Tolerance	
J	±5%
K	±10%
M	±20%

SHAPE AND DIMENSIONS



Part Number	Dimensions(mm)											
	ΦA1	ΦA2	B	D	E	F	G	C	H	T	I	M
SMD5845	5.9±0.1 5	5.2±0.1 5	1.5±0.1 5	4.5±0.1 5	1.00±0. 10	1.20±0. 10	1.20±0. 15	1.04±0. 10	1.04±0. 10	3.02±0. 10	1.50±0. 10	0.30±0. 10
SMD8050	8.0±0.1 5	7.06±0. 15	3.00±0. 15	5.2±0.1 5	1.00±0. 10	2.60±0. 15	1.60±0. 15	1.04±0. 10	1.04±0. 10	3.52±0. 10	3.30±0. 10	0.33±0. 10

ELECTRICAL DIAGRAM



- Such as: 1.2.3 is the winding foot position, 1 is the common foot in the middle, the sensitivity of 1-2 feet is 25uh, and the sensitivity of 1-3 feet is 800uh.

Remark: Design as Customer's request specification.

